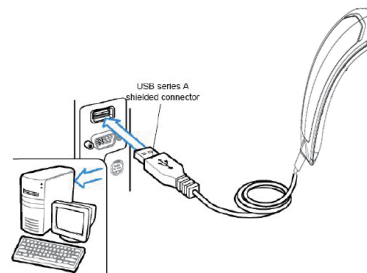


Connecting the Scanner

Connect USB cable to the USB port of a host PC.



Reading Mode

Continuous Mode



- * LED is always on.
- * The trigger does not function in Continuous Mode.

Flash Mode



- * The LED is on steady if a bar code is close to the scanner, but starts flashing if no bar code is detected after 60 seconds.
- * The trigger does not function in Flash Mode.

Trigger Mode*



- * The LED will light when the trigger is pressed.
- * The LED will go off when the trigger is released.

Continuous Auto Off



- * The LED is always on when the trigger is pressed.
- * The LED will go off if no bar code has been detected after 60 seconds.

Toggle Mode



- * The LED is always on when the trigger is pressed.
- * The LED will go off if one bar code is read.

Test Mode



* Factory Scanability Test Use Only

Factory Default



Write to Custom Defaults



Prefix and Suffix

Clear pre/ postamble



Postamble



Preamble



Example:
Set PREAMBLE String as "##"
POSTAMBLE String as "\$\$"

Setting Procedure:
Step 1 : Scan : CLEAR PRE/ POSTAMBLE.
Step 2 : Scan : PREAMBLE.
Step 3 : Scan : "# " twice from FULL ASCII Table.
Step 4 : Scan : PREAMBLE.
Step 5 : Scan : POSTAMBLE.
Step 6 : Scan : "\$ " twice from FULL ASCII Table.
Step 7 : Scan : POSTAMBLE.

*Please download user's manual from unitech website for FULL ASCII Table.

Data Format:
[Preamble] [Symbology ID] [Barcode Length] [Barcode Data] [Postamble] [Terminator]

- Notes:**
1. A PREAMBLE is a string of up to 16 characters added to the beginning of a scanned barcode.
 2. A POSTAMBLE is a string of up to 16 characters added to the end of a scanned barcode.
 3. Default value for both: None.

Keyboard Layout

US English*



UK English



Italian



Swiss (German)



Swiss (French)



Spanish



Slovak



French



Norwegian



German



Swedish



Brazilian (Portuguese)



ALT Code



Hungarian (Qwertz)



Hungarian (101 key)



Danish



Japanese (106 Key)



Belgian



Portuguese



Dutch



Canadian (French)



Canadian (Traditional)



CZECH (Qwertz)



CZECH (Qwerty)



* : Default Option

For more detailed scanner setting, please go to www.ute.com to download the user manual and the scanner configuration manager utility.

Beep Tone

Beep High



Beep Off



Beep Medium*



Beep Low

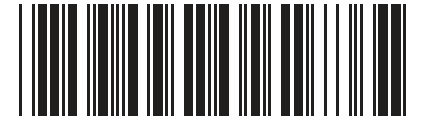


Send Data Length

Send Data Length On



Send Data Length Off *



Terminator

None



LF



CR*



CR+LF*



TAB



Space



ESC



Note:

Below is the position of Terminator among output data string:

[Preamble] [Symbology ID] [Barcode Length] [Barcode Data] [Postamble] [**Terminator**]

By default, with Preamble, Postamble, Barcode Length and Symbology ID disabled, the scanner data output will be:

[Barcode Data] [**Terminator**]

1. For the USB interface the default terminator is CR.
2. For the RS232 interface the default terminator is CR+LF.

Beeper Volume Control

High*



Medium



Low



Check Version



* : Default Option

For more detailed scanner setting, please go to www.ute.com to download the user manual and the scanner configuration manager utility.